

Erratum: Recognizing individual concert halls is difficult when listening to the acoustics with different musical passages [J. Acoust. Soc. Am. 148, 1380–1390 (2020)]

Antti Kuusinen and Tapio Lokki

Citation: *The Journal of the Acoustical Society of America* **151**, 2897 (2022); doi: 10.1121/10.0010388

View online: <https://doi.org/10.1121/10.0010388>

View Table of Contents: <https://asa.scitation.org/toc/jas/151/5>

Published by the *Acoustical Society of America*

ARTICLES YOU MAY BE INTERESTED IN

[Erratum: Perception of loudness and envelopment for different orchestral dynamics \[J. Acoust. Soc. Am. 148, 2137–2145 \(2020\)\]](#)

The Journal of the Acoustical Society of America **151**, 2843 (2022); <https://doi.org/10.1121/10.0010387>

[Reviews of Acoustical Patents](#)

The Journal of the Acoustical Society of America **151**, 2809 (2022); <https://doi.org/10.1121/10.0010351>

[Improving the measurement and acoustic performance of transparent face masks and shields](#)

The Journal of the Acoustical Society of America **151**, 2931 (2022); <https://doi.org/10.1121/10.0010384>

[Effect of alternate definitions of “high” annoyance on exposure-response functions](#)

The Journal of the Acoustical Society of America **151**, 2856 (2022); <https://doi.org/10.1121/10.0010354>

[Adaptive equalization based on dynamic compressive sensing for single-carrier multiple-input multiple-output underwater acoustic communications](#)

The Journal of the Acoustical Society of America **151**, 2877 (2022); <https://doi.org/10.1121/10.0010370>

[Stress imaging by guided wave tomography based on analytical acoustoelastic model](#)

The Journal of the Acoustical Society of America **151**, 2863 (2022); <https://doi.org/10.1121/10.0010359>



Why Publish in POMA?

Watch Now 

Erratum: Recognizing individual concert halls is difficult when listening to the acoustics with different musical passages [J. Acoust. Soc. Am. 148, 1380–1390 (2020)]

Antti Kuusinen^{a)}  and Tapio Lokki 

Department of Signal Processing and Acoustics, Aalto University School of Electrical Engineering, Espoo, Finland

(Received 14 April 2022; accepted 18 April 2022; published online 28 April 2022)

<https://doi.org/10.1121/10.0010388>

[Editor: James F. Lynch]

Page: 2897

This erratum concerns Fig. 4 in the previously published article.¹ Due to a programming error, some of the objective parameters were computed from one source only, not the average of the sources that correspond to the instrumentation in the sound samples. The corrected figure and legend are shown below.

Moreover, the discussion on the parameters in Sec. II B in the previously published article¹ is not exactly valid in all aspects. However, the discussion was only concerning values in Fig. 4, and naturally the listening test signals and results are not affected by these parameters in the original article.

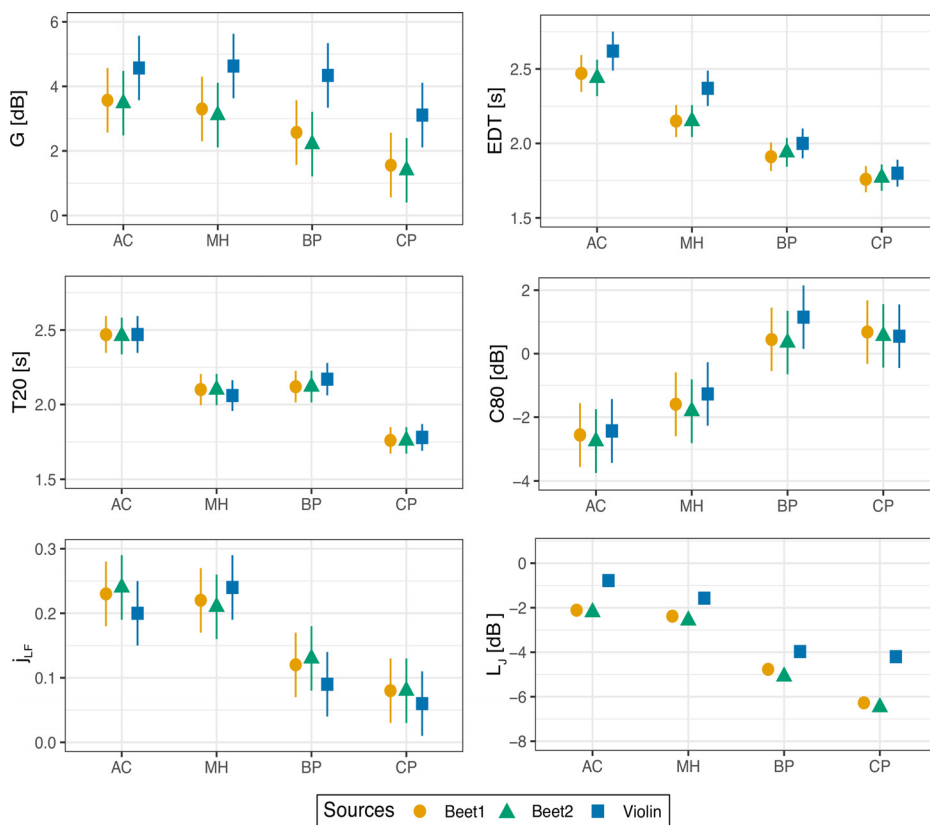


FIG. 4. (Color online) Objective parameter values calculated by using only the sources that correspond to the instrumentation in the sound samples. The vertical lines represent the JNDs.

¹A. Kuusinen and T. Lokki, “Recognizing individual concert halls is difficult when listening to the acoustics with different musical passages,” *J. Acoust. Soc. Am.* **148**(3), 1380–1390 (2020).

^{a)}Electronic mail: antti.kuusinen@aalto.fi