

- Motivation
- Phase transition
- Formalization
- Experiments
- Approaches
 - SAT Planning
 - State-space search
 - LPG
- 1st test series
 - Runtimes
 - Plan lengths
- 2nd test series
 - Phase transition
 - Runtimes
 - Plan lengths
 - LPG, HSP, FF
- Discussion
- Conclusions

Phase Transitions in Classical Planning: An Experimental Study

Jussi Rintanen

Albert-Ludwigs-Universität Freiburg, Germany

June 7, ICAPS'04

(Albert-Ludwigs-Universität Freiburg)

June 7, ICAPS'04

Motivation

Motivation

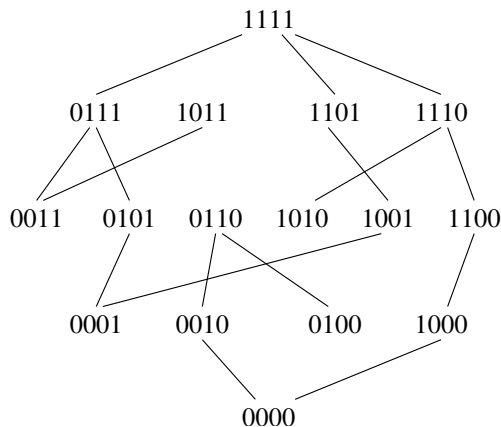
- ▶ Almost all of the standard benchmarks are solvable by simple polynomial-time problem-specific algorithms.
 - Narrow class, not representative (in general; applications)!
 - Say little about performance of planners in general!
- ▶ How were difficult instances obtained: increase the number of packages, airplanes, ... (≥ 2000 state variables, ≥ 40000 operators,)
- ▶ Actually, 20 state variables and 40 operators is a challenge to many planners!!!

(Albert-Ludwigs-Universität Freiburg)

June 7, ICAPS'04

Phase transition

Planning phase transition



(Albert-Ludwigs-Universität Freiburg)

June 7, ICAPS'04

Formalization

Problem instances

Characterized by the following parameters.

1. number n of state variables (size of state space)
2. number of operators
3. number of effect literals in operators (*our experiments: 2*)
4. number of precondition literals (*our experiments: 3*)
5. number of goal literals (*our experiments: n*)
6. number of goal literals with value differing from the initial value (*our experiments: n*).

(Albert-Ludwigs-Universität Freiburg)

June 7, ICAPS'04

How to get challenging benchmarks?

Analogy: SAT benchmarks

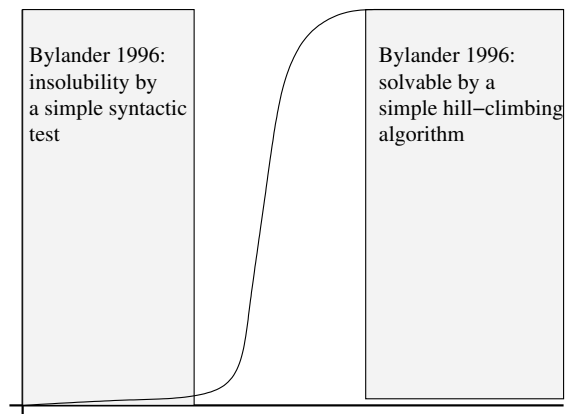
1. Notoriously difficult to come by just by inventing some.
2. Prove that for any algorithm the problem is difficult (pigeon-hole formulas for DPLL/resolution!): not very interesting...
3. Go to Intel and ask for problems that resist solution. (Which company is the Intel of planning?)
4. Experiment with the set of **all** instances, identifying problem parameters that make planning difficult.

(Albert-Ludwigs-Universität Freiburg)

June 7, ICAPS'04

Motivation

How to solve the easiest problems



(Albert-Ludwigs-Universität Freiburg)

June 7, ICAPS'04

Formalization

Further restrictions

- ▶ Model B (Bylander 1996): no restrictions.
- ▶ Model C: each literal occurs as effect at least once. *Otherwise very likely some goal literals cannot be made true: many trivially insoluble instances.*
- ▶ Model A: each literal occurs as effect about the same number of times. *Model C does not fully fix the problem in Model B, so we go a bit further in Model A.*

(Albert-Ludwigs-Universität Freiburg)

June 7, ICAPS'04

Experimental set-up

- ▶ Fix other parameters, and vary the number of operators.
 ⇒ What happens to **difficulty** when the number of arcs (~ operators) in the transition graph is varied?
- ▶ Number of instances for given parameter values is astronomic, so we **sample the space of all problem instances**.
- ▶ Evaluate runtimes and plan lengths of different planners.

(Albert-Ludwigs-Universität Freiburg)

June 7, ICAPS'04

Approaches SAT Planning

Planner: SP

- ▶ Our own (here: SP, for Satisfiability Planning)
- ▶ Improved problem encodings: formula size often $\leq \frac{1}{5}$ of BLACKBOX and runtimes $\frac{1}{10}, \frac{1}{100}, \frac{1}{1000}$ on big problems.
- ▶ With novel evaluation strategies very good on standard benchmarks without any benchmark-specific tricks!! See ECAI'00 paper.
- ▶ BLACKBOX about as good as SP on the small problem instance we discuss in this talk.

(Albert-Ludwigs-Universität Freiburg)

June 7, ICAPS'04 1

Approaches State-space search

Planners: HSP an FF

1. HSP (Bonet and Geffner, 2001)
2. FF (Hoffmann and Nebel, 2001)
 - ▶ additional techniques inspired by the standard benchmarks
 - ▶ very good on standard benchmarks

(Albert-Ludwigs-Universität Freiburg)

June 7, ICAPS'04 1

1st test series

First test series

- ▶ Model A (Results on Model C are similar.)
- ▶ 20 state variables, from 36 to 120 operators at interval ~ 6
- ▶ About 500 soluble instance for each operators / variable ratio (about 8000 soluble instances out of 10000, identified by a BDD-based breadth-first search planner)
- ▶ Measure runtimes and plan lengths (timeout 10 minutes)

(Albert-Ludwigs-Universität Freiburg)

June 7, ICAPS'04 1

Approach: satisfiability planning

- ▶ First developed by Kautz and Selman (1992, 1996)
- ▶ Translate planning into formulae, find plans with a SAT solver.
- ▶ The commercially most successful planning technology (*outside planning!!!*): **bounded model-checking** since 1999 a leading technology for model-checking, mega-USD business
- ▶ Has not been considered competitive on current benchmarks. Main reason: "faster" planners give no quality guarantees.

(Albert-Ludwigs-Universität Freiburg)

June 7, ICAPS'04 1

Approaches State-space search

Approach: heuristic state-space search

- ▶ Heuristic search in the state space + distance heuristics
- ▶ Reference: Bonet and Geffner (2001)
- ▶ Favored by the planning competition community.

(Albert-Ludwigs-Universität Freiburg)

June 7, ICAPS'04 1

Approaches LPG

LPG: planning graphs + heuristic search

- ▶ Developed by Gerevini and Serina (1999-)
- ▶ Basic data structure: planning graph from Graphplan (Blum & Furst, 1995)
- ▶ Local search with incomplete plans (~ planning graphs)
- ▶ Advantage over earlier planning graph approaches: length increased dynamically during search (optimality given up!)

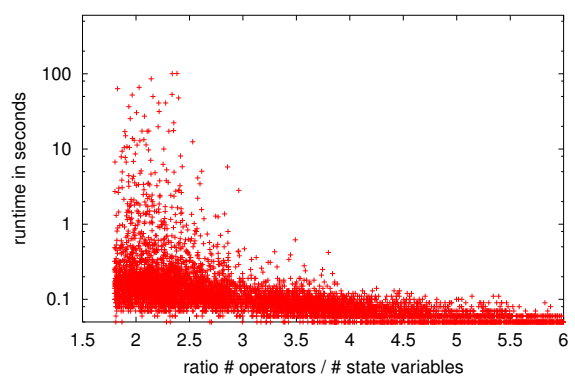
(Albert-Ludwigs-Universität Freiburg)

June 7, ICAPS'04 1

1st test series Runtimes

Runtimes: SP

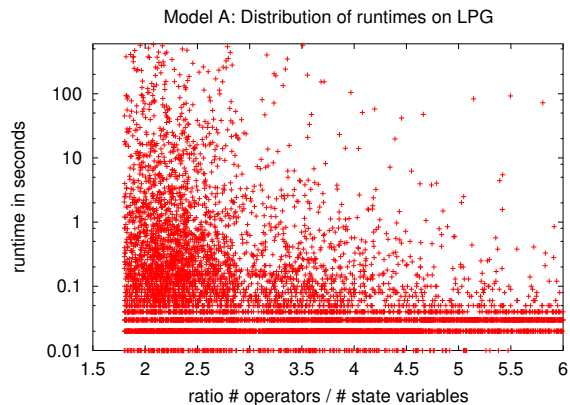
Model A: Distribution of runtimes on SP



(Albert-Ludwigs-Universität Freiburg)

June 7, ICAPS'04 1

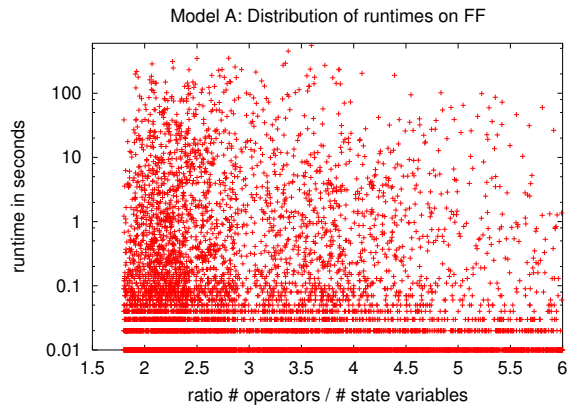
Runtimes: LPG



(Albert-Ludwigs-Universität Freiburg)

June 7, ICAPS'04 1

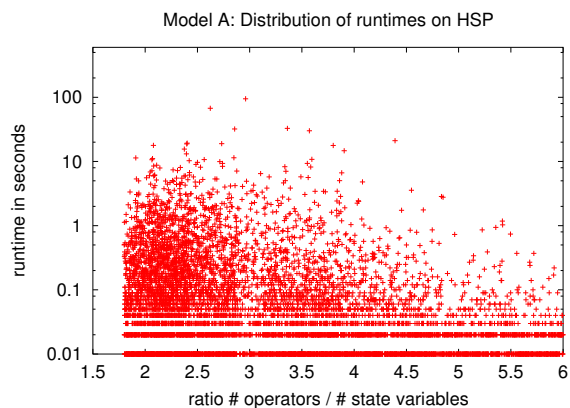
Runtimes: FF



(Albert-Ludwigs-Universität Freiburg)

June 7, ICAPS'04 1

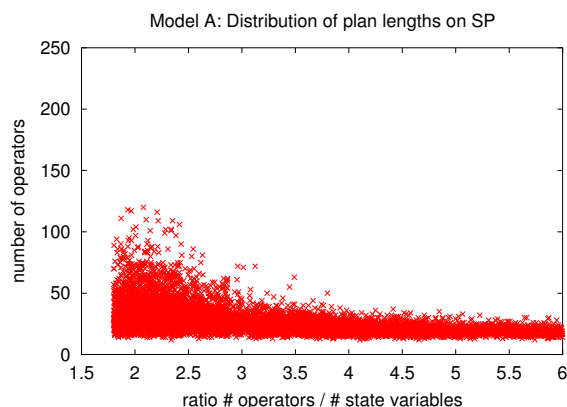
Runtimes: HSP



(Albert-Ludwigs-Universität Freiburg)

June 7, ICAPS'04 1

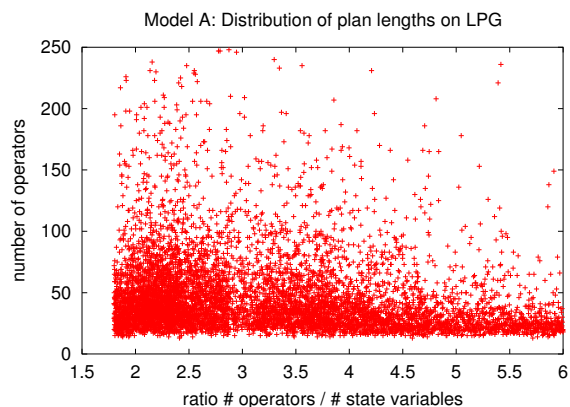
Plan lengths: SP



(Albert-Ludwigs-Universität Freiburg)

June 7, ICAPS'04 2

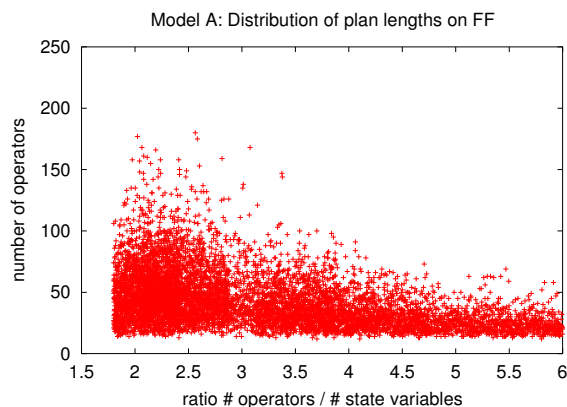
Plan lengths: LPG



(Albert-Ludwigs-Universität Freiburg)

June 7, ICAPS'04 2

Plan lengths: FF



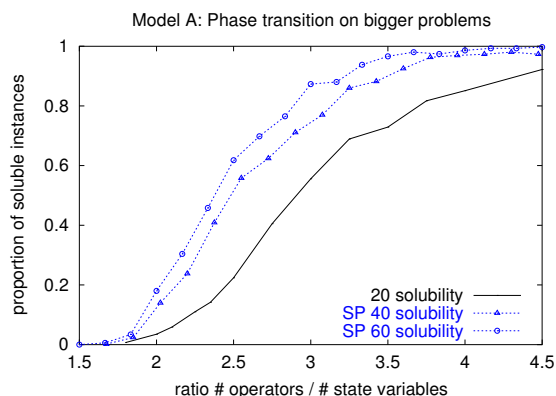
(Albert-Ludwigs-Universität Freiburg)

June 7, ICAPS'04 2

Further tests: scalability

- ▶ 20, 40 and 60 state variables ($\sim 10^6, 10^{12}, 10^{18}$ states)
- ▶ No efficient insolubility test: could not distinguish between insoluble and very difficult instances.
- ▶ Main results for SP only (SP scales up by far the best.)
- ▶ LPG, HSP and FF: proportion of solved instances wrt SP (timeo 10 minutes)

Phase transition becomes steeper



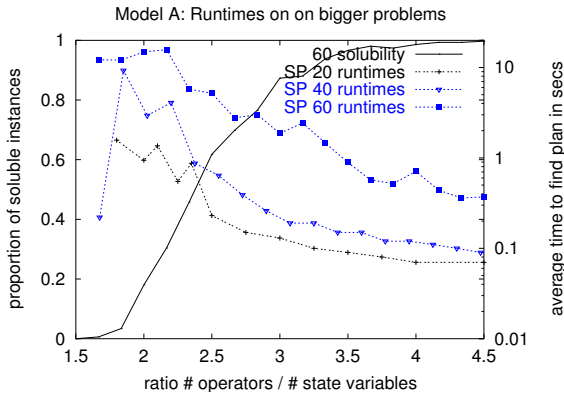
(Albert-Ludwigs-Universität Freiburg)

June 7, ICAPS'04 2

(Albert-Ludwigs-Universität Freiburg)

June 7, ICAPS'04 2

Runtimes: mean

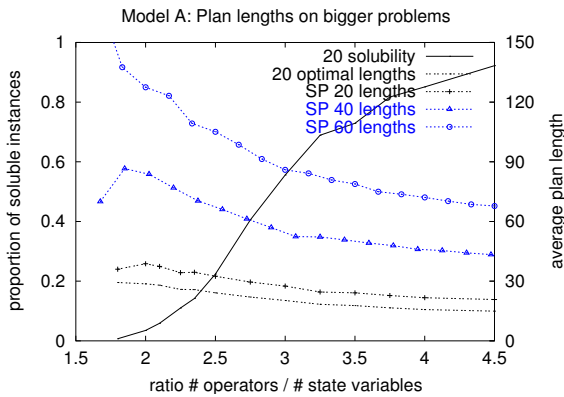


(Albert-Ludwigs-Universität Freiburg)

June 7, ICAPS'04 2

2nd test series Plan lengths

Plan lengths

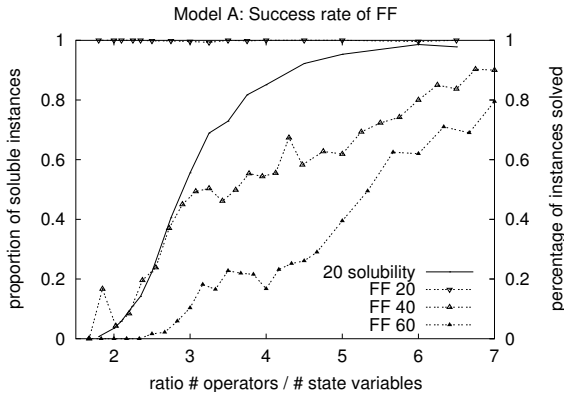


(Albert-Ludwigs-Universität Freiburg)

June 7, ICAPS'04 2

2nd test series LPG, HSP, FF

FF timeouts



(Albert-Ludwigs-Universität Freiburg)

June 7, ICAPS'04 2

Discussion

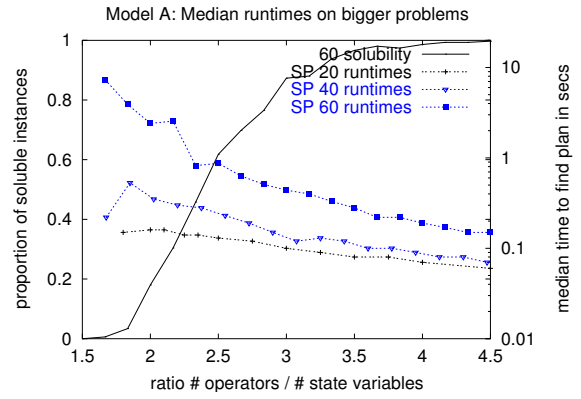
Why does SP scale up best?

1. Like LPG, SP's problem representation explicitly uses state variables. (a fundamental difference to HSP and FF).
2. Powerful general-purpose inferences: unit resolution, clause learning, ..., as implemented by SAT solvers. (a main difference LPG)
3. Systematic search algorithm (a main difference to LPG)

(Albert-Ludwigs-Universität Freiburg)

June 7, ICAPS'04 2

Runtimes: median

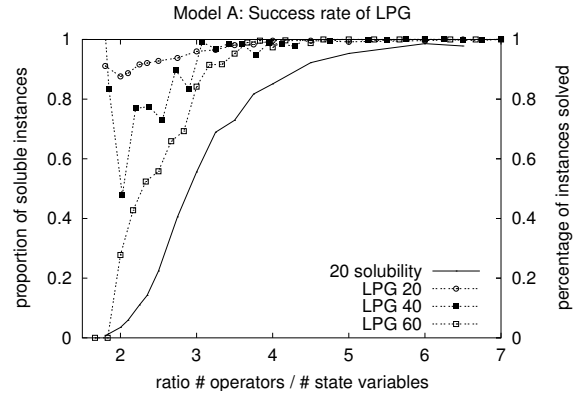


(Albert-Ludwigs-Universität Freiburg)

June 7, ICAPS'04 2

2nd test series LPG, HSP, FF

LPG timeouts

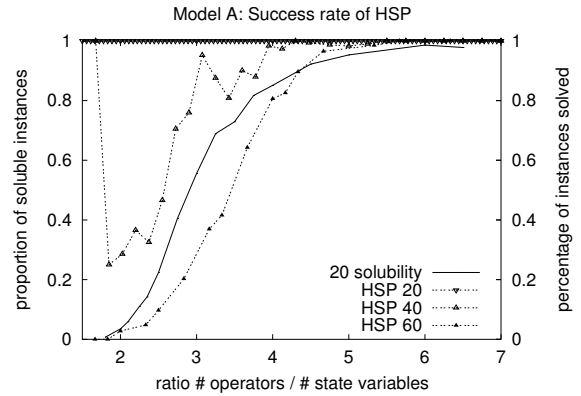


(Albert-Ludwigs-Universität Freiburg)

June 7, ICAPS'04 2

2nd test series LPG, HSP, FF

HSP timeouts



(Albert-Ludwigs-Universität Freiburg)

June 7, ICAPS'04 2

Discussion

Why does LPG scale up better than HSP, FF?

1. LPG's problem representation explicitly uses state variables.
2. State-space search in HSP and FF ignores the structural information in the state variables (and operators).
3. HSP and FF look at the the state variables only when computing the distance estimates.

(Albert-Ludwigs-Universität Freiburg)

June 7, ICAPS'04 2

Why does HSP scale better than FF?

- ▶ FF has “Helpful Actions Pruning”: ignore operators considered “not helpful” (as suggested by computation of heuristic).
- ▶ HAP is a factor in FF’s good performance on many of the big-and-easy benchmarks.
- ▶ **On easy problems performance improves and equals to HSP when HAP is disabled.**
- ▶ So HAP is a big drawback when distance heuristics do not work well (all difficult problems and many easy ones.)

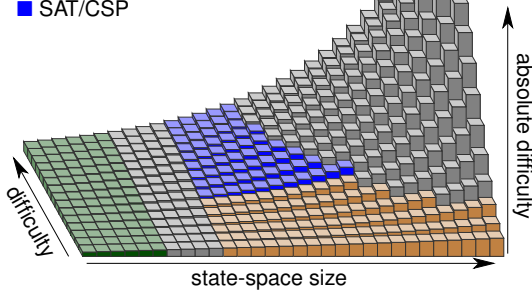
(Albert-Ludwigs-Universität Freiburg)

June 7, ICAPS’04

Discussion

STRENGTHS

- blind state-space search
- heuristic state-space search
- SAT/CSP



(Albert-Ludwigs-Universität Freiburg)

June 7, ICAPS’04

Discussion

- ▶ *Are problems in the phase transition region difficult?*
Yes, for all of the four planners.
- ▶ *And outside it they are easy?*
Yes, for most of the planners. (exception: FF)
- ▶ *Do the results agree with what is known about the algorithms?*
 1. Yes! Bounded model checking (~ satisfiability planning) good in challenging real-world problems: scalability not a direct function of the cardinality of the state space.
 2. Yes! State-space search has not been considered a feasible approach to solve difficult problems with big state spaces (> 10 million states).
 3. Yes/No! Standard planning benchmarks have huge state spaces and are efficiently solved by some state-space planners. **But**, the benchmarks are actually rather easy.

(Albert-Ludwigs-Universität Freiburg)

June 7, ICAPS’04

Conclusions

Conclusions

- ▶ We have proposed variants of Bylander’s model of problem instances in classical planning.
- ▶ We have tested some of the main approaches to planning on instances inside and outside the phase transition region.
- ▶ Results clarify what the strengths of different approaches are.
⇒ Interesting complement to standard benchmarks.

(Albert-Ludwigs-Universität Freiburg)

June 7, ICAPS’04